

Netherby-1 LWD RM 200TVD

IDEAL Version: ID13_0C_08

IDF

FPWD id13_0c_02

Format: VISION Service RM Log Vertical Scale: 1:200 Graphics File Created: 01-Aug-2008 05:08

PIP SUMMARY

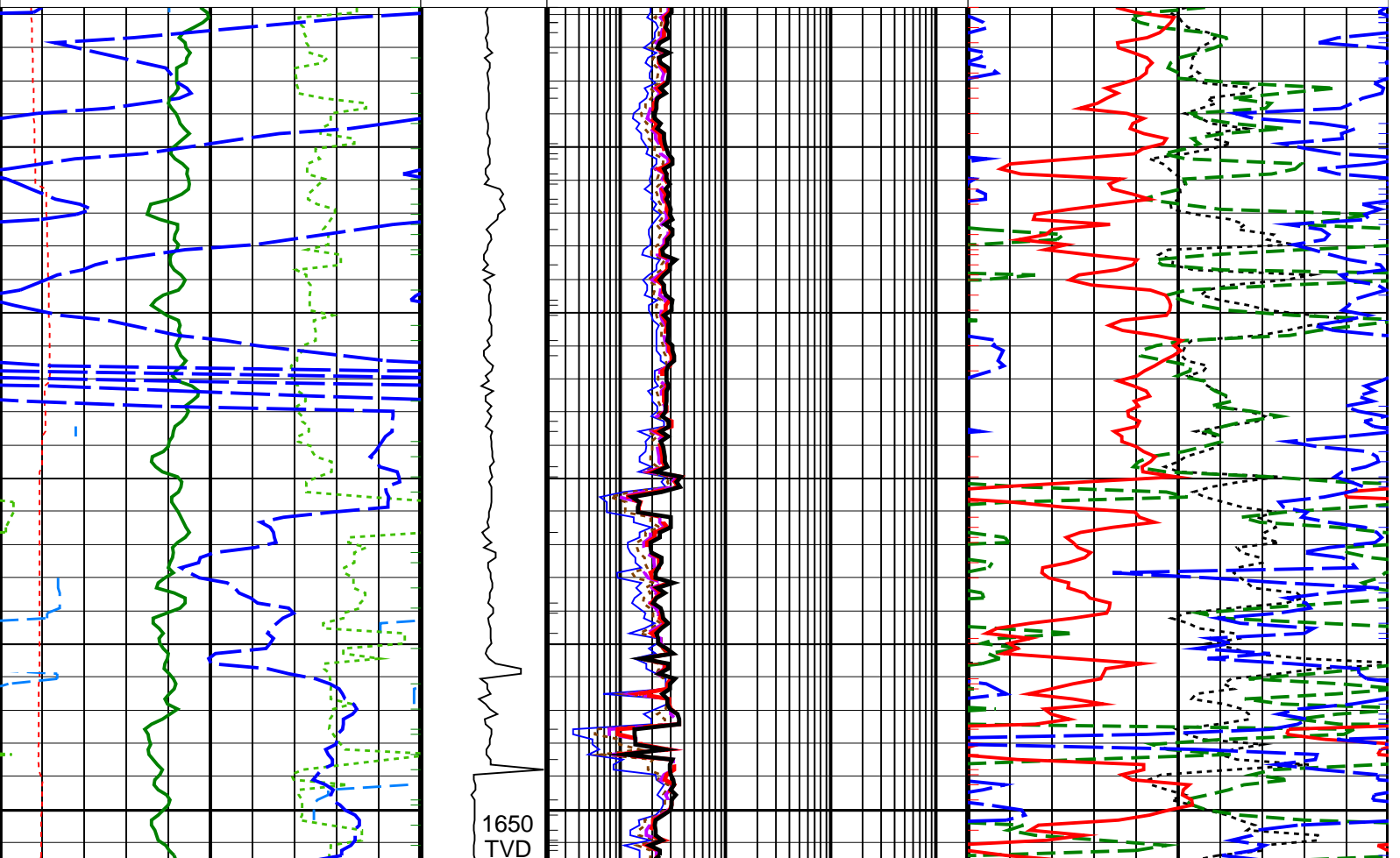
Density Samples †

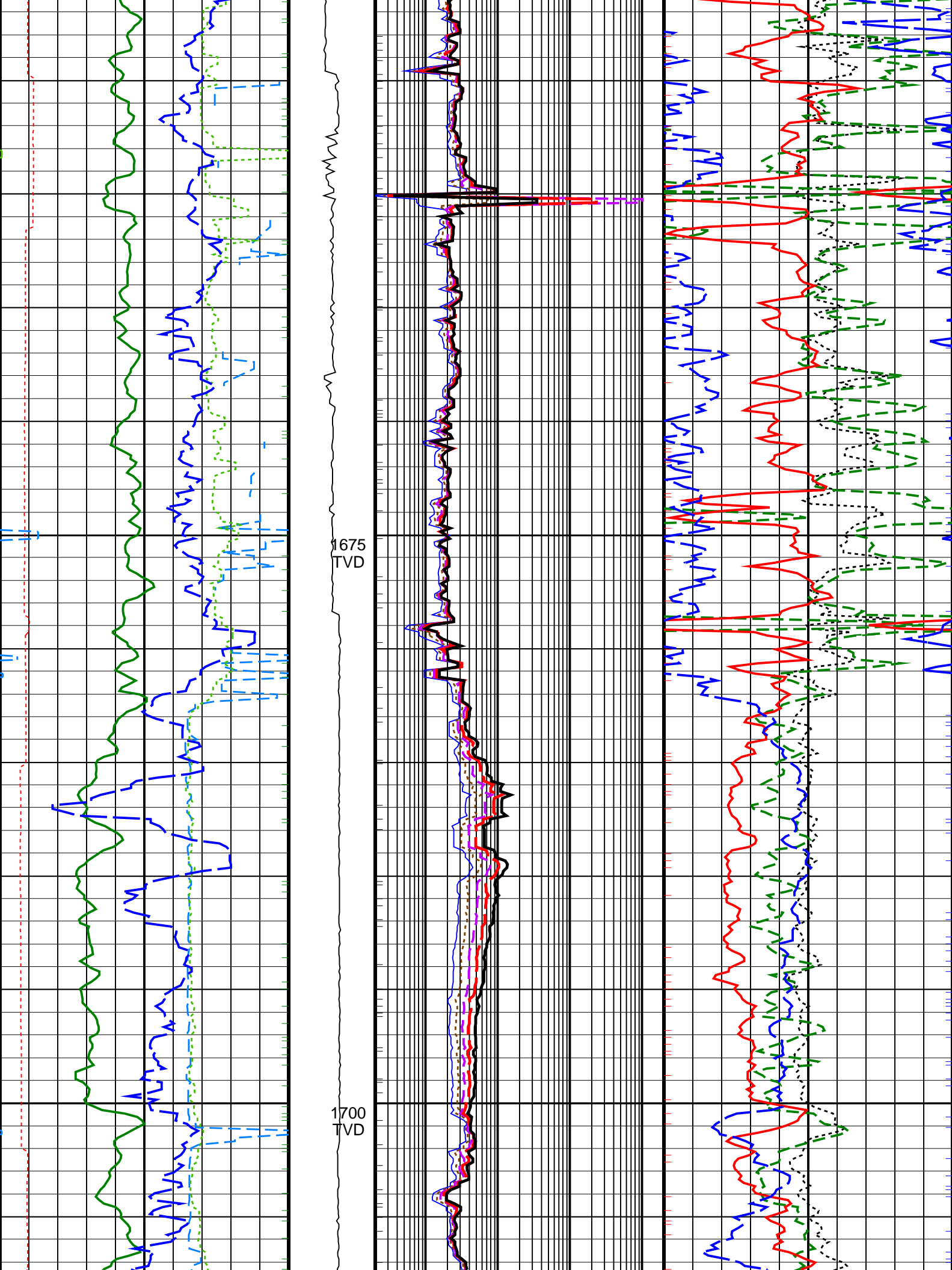
Neutron Samples †

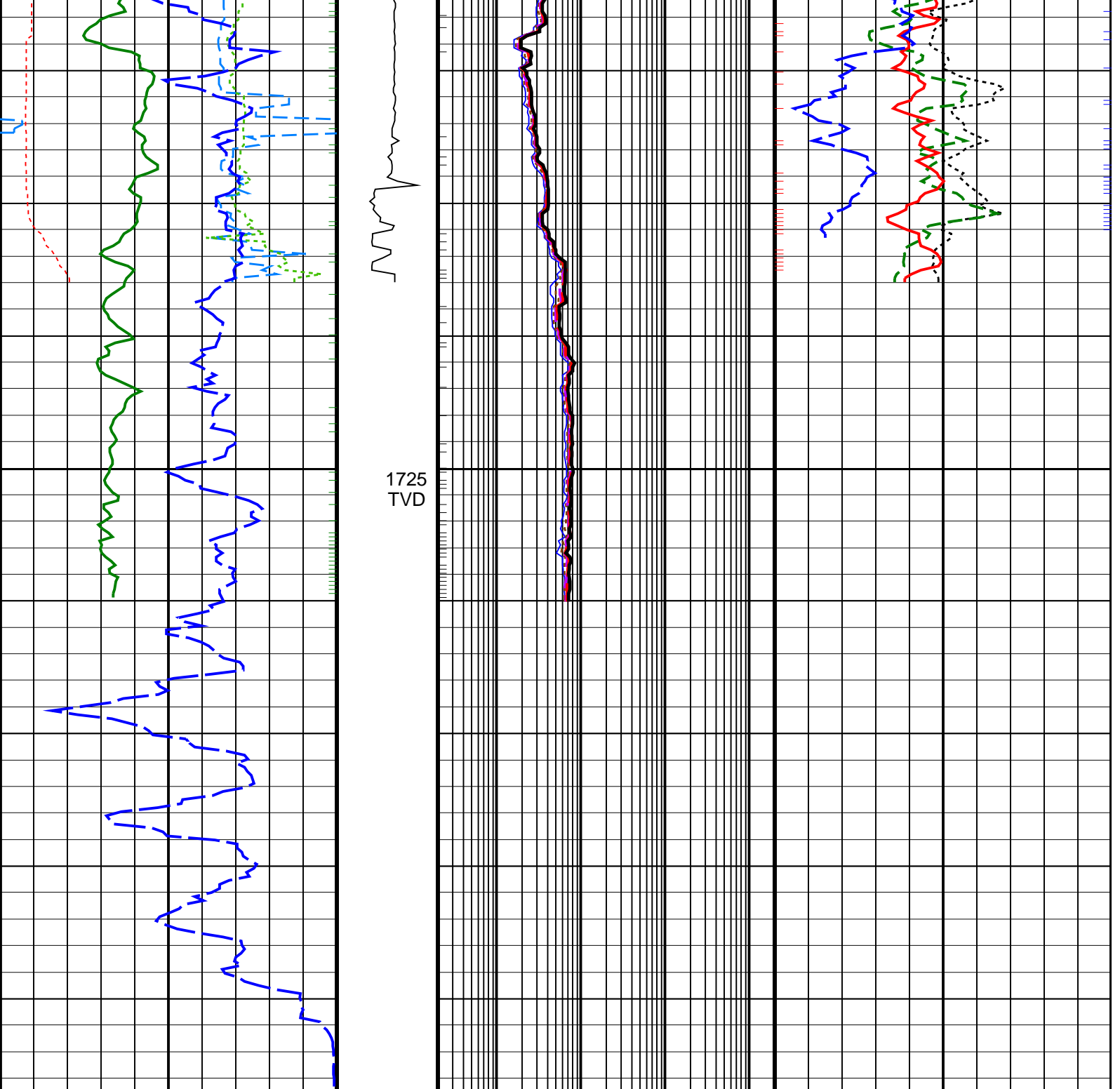
† ARC Gamma Ray Samples

† ARC Resistivity Samples

<p>Rate of Penetration, Averaged over Last 5ft (ROP5_RM) (M/HR) 0</p>	<p>ARC Phase-Shift Resistivity 40-in. at 2 MHz (P40H) (OHMM) 2000</p>	
<p>ARC Gamma Ray (GR_ARC) (GAPI) 200</p>	<p>ARC Phase-Shift Resistivity 34-in. at 2 MHz (P34H) (OHMM) 2000</p>	<p>Thermal Neutron Porosity (TNPH) (PU) 45 -15</p>
<p>Vertical Hole Diameter (VERD) (IN) 6 16</p>	<p>ARC Phase-Shift Resistivity 28-in. at 2 MHz (P28H) (OHMM) 2000</p>	<p>Bulk Density, Bottom (ROBB) (G/C3) 1.95 2.95</p>
<p>Horizontal Hole Diameter (HORD) (IN) 6 16</p>	<p>ARC Phase-Shift Resistivity 22-in. at 2 MHz (P22H) (OHMM) 2000</p>	<p>Photoelectric Factor, Bottom (PEB) (----) 0 10</p>
<p>Density Time After Bit (TAB_DEN) (HR) 0 10</p>	<p>ADN Rotational Speed (RPM_ADN) (RPM) 200 0</p>	<p>ARC Phase-Shift Resistivity 16-in. at 2 MHz (P16H) (OHMM) 2000</p>
		<p>Bulk Density Correction, Bottom (DRHB) (G/C3) -0.25 0.25</p>







<p>Density Time After Bit (TAB_DEN) (HR)</p> <p>0 10</p>	<p>ADN Rotational Speed (RPM_ADN) (RPM)</p> <p>200 0</p>	<p>ARC Phase-Shift Resistivity 16-in. at 2 MHz (P16H) (OHMM)</p> <p>0.2 2000</p>	<p>Bulk Density Correction, Bottom (DRHB) (G/C3)</p> <p>-0.25 0.25</p>
<p>Horizontal Hole Diameter (HORD) (IN)</p> <p>6 16</p>		<p>ARC Phase-Shift Resistivity 22-in. at 2 MHz (P22H) (OHMM)</p> <p>0.2 2000</p>	<p>Photoelectric Factor, Bottom (PEB) (----</p> <p>0 10</p>
<p>Vertical Hole Diameter (VERD) (IN)</p> <p>6 16</p>		<p>ARC Phase-Shift Resistivity 28-in. at 2 MHz (P28H) (OHMM)</p> <p>0.2 2000</p>	<p>Bulk Density, Bottom (ROBB) (G/C3)</p> <p>1.95 2.95</p>
<p>ARC Gamma Ray (GR_ARC) (GAPI)</p> <p>0 200</p>		<p>ARC Phase-Shift Resistivity 34-in. at 2 MHz (P34H) (OHMM)</p> <p>0.2 2000</p>	<p>Thermal Neutron Porosity (TNPH) (PU)</p> <p>45 -15</p>

Rate of Penetration, Averaged over Last
5ft (ROP5_RM)
200 (M/HR) 0

ARC Phase-Shift Resistivity 40-in. at 2
MHz (P40H)
0.2 (OHMM) 2000

PIP SUMMARY

Density Samples +

Neutron Samples -

+ ARC Gamma Ray Samples

+ ARC Resistivity Samples

IDEAL Version: ID13_OC_08

IDF

FPWD

id13_0c_02

True Vertical Depth Log